



Addison Way, Hampstead Garden Suburb, NW11

£1,200,000

Freehold



800 finchley road, hampstead garden suburb, london, nw11 7tj

telephone 020 8458 5000 facsimile 020 8209 2068

email sales@litchfields.com web litchfields.com

offices also in crouch end & highgate

Surrounded by lovely gardens to three sides. A wonderful corner semi-detached cottage conveniently placed for Temple Fortune's multiple shops, cafés and buses. This superb property is offered in excellent condition. It has been sympathetically renovated to a high standard by the current owners and immaculately maintained. This stylish four bedroom home features a newly laid solid oak floor throughout the ground floor plus a newly installed bespoke, hand-painted kitchen. Viewing of this charming property is strongly advised.



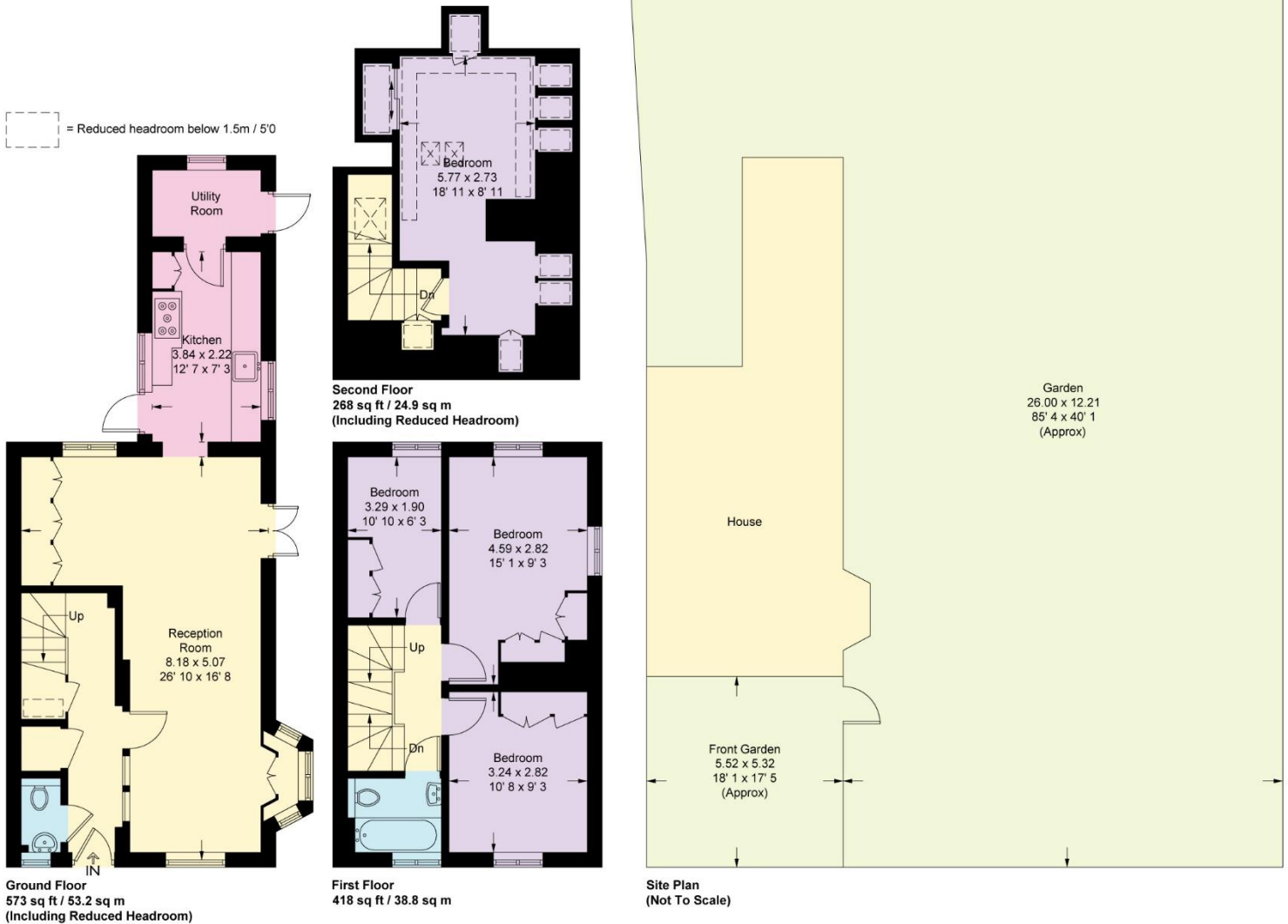


Four Bedrooms
 Bathroom
 Large lounge/dining room
 Newly installed kitchen
 Utility room
 Cloakroom
 Lovely gardens to three sides
 Close to Temple Fortune
 Corner semi detached
 EPC=D



Addison Way

Approximate Gross Internal Area = Total = 1259 sq ft / 116.9 sq m



This plan is not to scale and must be used as layout guidance only. All measurements and areas are approximate and should not be relied upon to provide accurate information. This plan must not be relied upon when making property valuations, design considerations or any other such relevant decisions. We accept no responsibility or liability (whether in contract, tort or otherwise) in relation to any loss whatsoever arising from or in connection with any use of this plan or the adequacy, accuracy or completeness of it or any information within it.